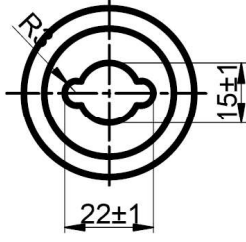


## MARK VIEW



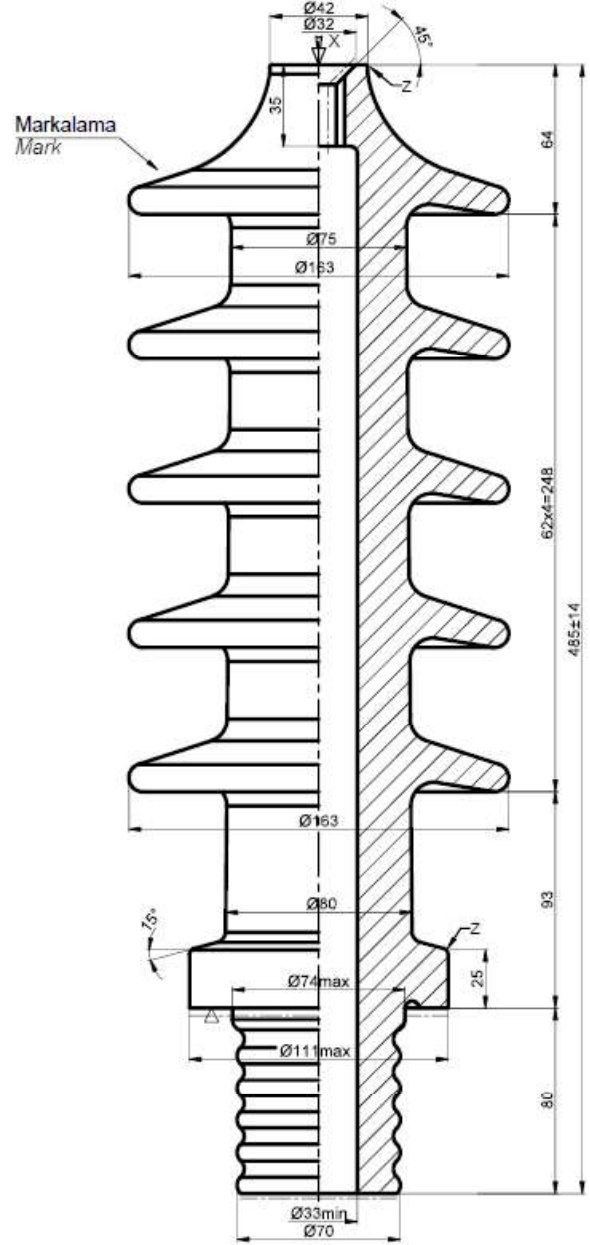
'X' Bakışı  
View 'X'

---▽--- Taşlanmış Yüzey (Grinding surface)  
----- Sırsız Yüzey (Unglazed Surface)

ELEKTRİKSEL PERFORMANS ELECTRICAL PERFORMANCE (IEC 60137-2015)	
En Yüksek Çalışma Gerilimi (Nominal-Highest System Voltage)(Um)	36 kV
Anma Akımı (Rated Current)	250 A
Şebeke Frekanslı Dayanım Gerilimi (Power Frequency Withstand Voltage)	Kuru (Dry) 77 kV
	Yaş (Wet) 70 kV
Yıldırım Darbe Dayanma Gerilimi (Lightning Impulse Withstand Voltage)	170 kV

MEKANİKSEL PERFORMANS MECHANICAL PERFORMANCE (IEC 60137-2015)	
Konsol Çalışma Yüğü (Cantilever Operating Load)	500 N

DIELEKTRİK PARÇALAR (DIELECTRIC PARTS)	
Malzeme (Material) IEC 60672-3	Porselen (Porcelain)
Kaçak Mesafesi (Creepage Distance)	(Z-Z) min. 720mm
Sır Rengi (Glaze Color)	Kahverengi (Brown)
Tolerans (General Tolerance)	DIN 40680
Ağırlık (Weight)	~7,5 kg



03

02

01

00

Rev

10/08/23

RV

MA

MA

Original

General Tolerance : DIN 40680

All dimension in millimetres unless otherwise stated

IF IN DOUBT - PLEASE ASK !

**MP**  
metsonpower

Title

HV BSH 30NF/250A (CD:720mm) DIN 42531

Description

GA DWG BSH 30NF250A - Düz

Scale



Drawing No.

Sheet No.

Total Sheet

Size

1

1

1

1

1

1

1

1

1

1

1

1

1

1

1

1

1

4

3

2

1