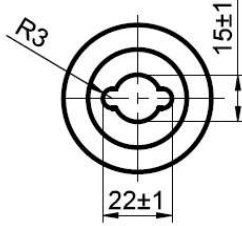


MARK VIEW



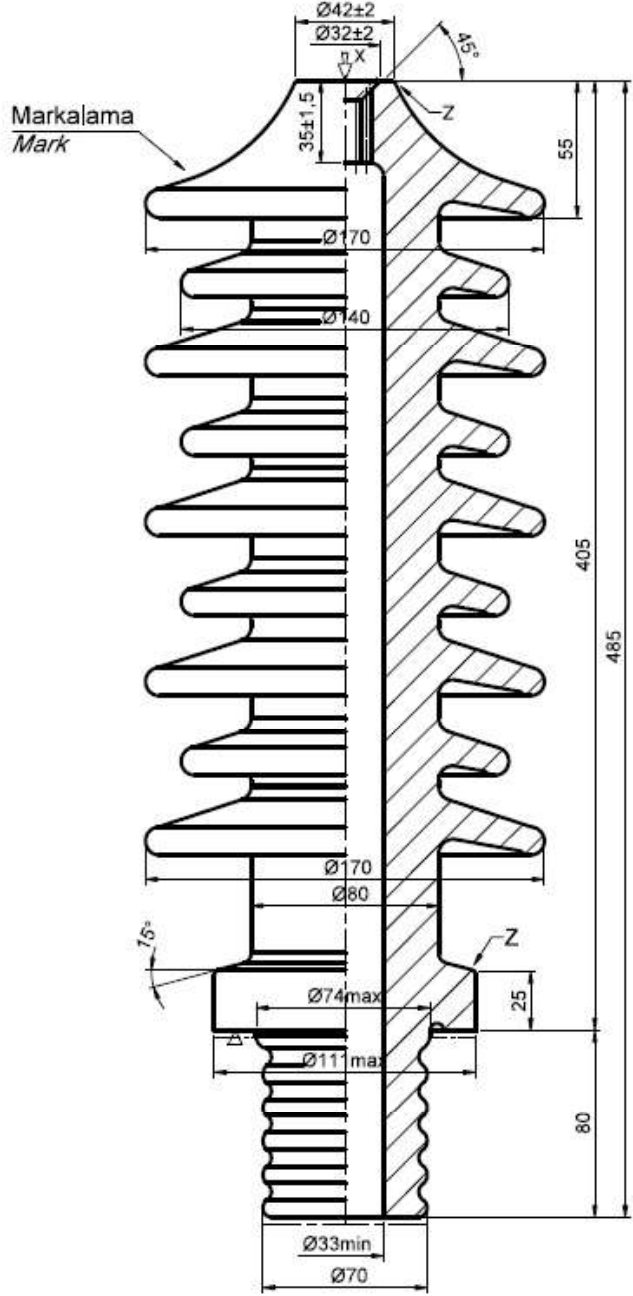
'X' Bakışı
View 'X'



---▽--- Taşlanmış Yüzey (Grinding surface)
- - - - - Sırsız Yüzey (Unglazed Surface)

ELEKTRİKSEL PERFORMANS ELECTRICAL PERFORMANCE (IEC 60137-2015)	
En Yüksek Çalışma Gerilimi (Nominal-Highest System Voltage)(Um)	36 kV
Anma Akımı (Rated Current)	250 A
Şebeke Frekanslı Dayanım Gerilimi (Power Frequency Withstand Voltage)	Kuru (Dry) 77 kV
	Yaş (Wet) 70 kV
Yıldırım Darbe Dayanım Gerilimi (Lightning Impulse Withstand Voltage)	170 kV

MEKANİKSEL PERFORMANS MECHANICAL PERFORMANCE (IEC 60137-2015)	
Konsol Çalışma Yüğü (Cantilever Operating Load)	500 N

DIELEKTRİK PARÇALAR (DIELECTRIC PARTS)	
Malzeme (Material) IEC 60672-3	Porselen (Porcelain)
Kaçak Mesafesi (Creepage Distance)	(Z-Z) min. 900mm
Sır Rengi (Glaze Color)	Kahverengi (Brown)
Tolerans (General Tolerance)	DIN 40680
Ağırlık (Weight)	~8,75 kg



03					
02					
01					
00	10/08/23	RV	MA	MA	Original
Rev	Date	Drw	Chk	App	Description
General Tolerance : DIN 40680					All dimension in millimetres unless otherwise stated
					IF IN DOUBT - PLEASE ASK !
					Title
					HV BSH 30NF/250A (CD:900mm) DIN 42531
					Description
					GA DWG BSH 30NF250A - Düz
Metson Power Çamlıca Mah. Anadolu Bulv. Timco İşyerleri B Blok No:6 06200 Yenimahalle, Ankara TURKEY					Drawing No.
					Sheet No.
					Total Sheet
					Size
					1
					1
					A4