

LIQUID FILLED THERMOMOTERS

NOMINAL SIZE 100mm

CONSTRUCTIVE SPECIFICATIONS:

Thermowell Connection: R1/2" Stainless steel.

Movement: Brass for precision clockwork.

Sensor Tube: Steel material.

Capillary Tube: Steel material.

Pointer: Micro-metric Calibrated.

Case: Steel, Black enamel.

Front ring: Chrome plated, steel.

Window: Glass.

OPERATING RANGE: Use 3/4 of full scale, short time peaks up to the full scale.

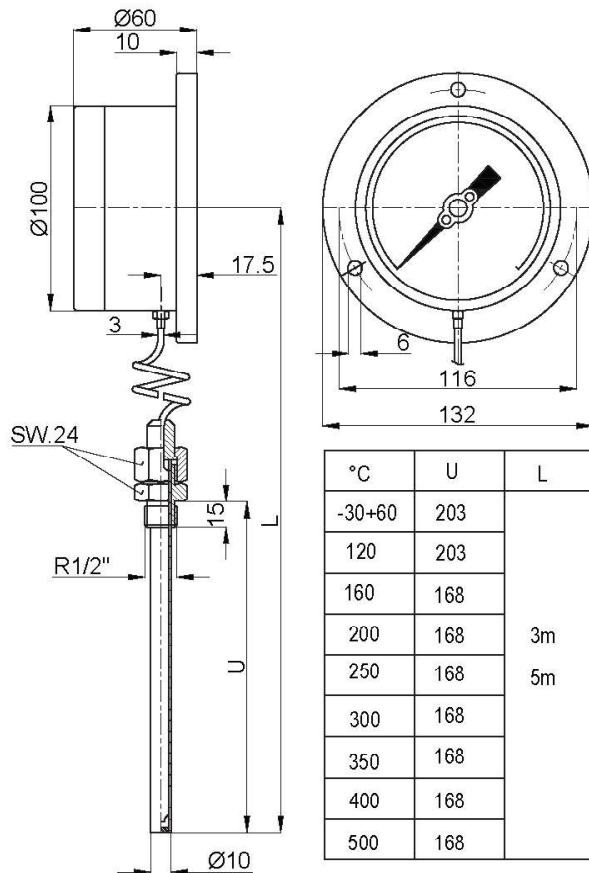
MEASURING RANGE: -40+60°C/0+120°C/0+160°C/0+200°C/0+250°C/0+300°C/0+350°C/0+400°C/0+500°C

CAPPILARY LENGTH: 3 and 5 meters.
Other measuring units can be printed on the dial, depending on the requirements.

TECHNICAL SPECIFICATIONS:

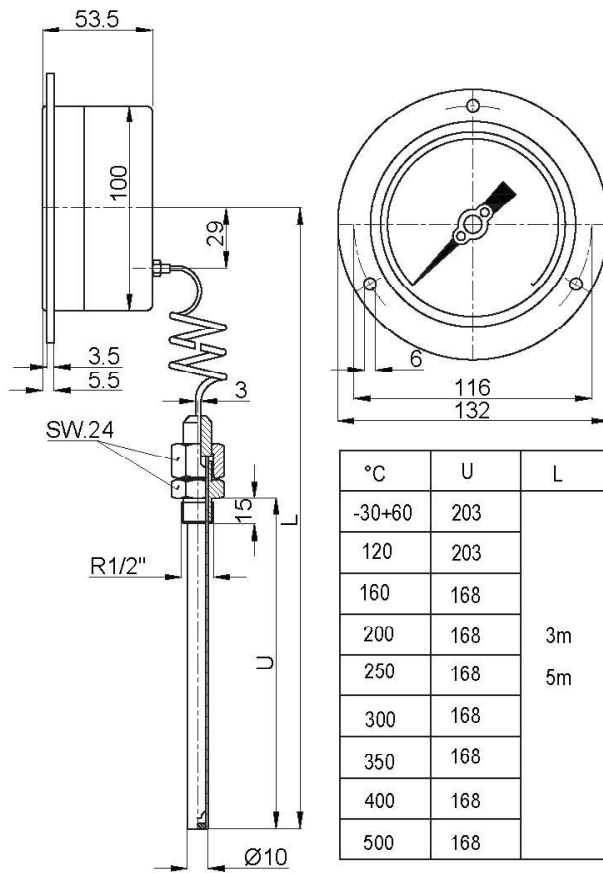
Accuracy: 1.0% F.S.,(DIN 16203)

Mounting: Thermowell is mounted to the place where it is going to measure the temperature. Thermometers are calibrated according to the DIN 16203. The base environment temperature is $23 \pm 2^\circ\text{C}$. The environment temperature of the capillary tube and the case of the thermometer is advised not to be over $\pm 10^\circ\text{C}$ of that calibration temperature.



Back Flange Bottom Outlet
Nr:100601
WEIGHT: 1180 gr

TO ORDER
Nr + Scale + Capillary length "L" + Quantity



Front Flange Bottom Outlet
Nr:100602
WEIGHT:1250 gr

LIQUID FILLED THERMOMOTERS

NOMINAL SIZE 160mm

CONSTRUCTIVE SPECIFICATIONS:

Thermowell Connection: R 1/2 " Stainless stell.

Movement: Brass for precision clockwork.

Sensor Tube: Steel material.

Cappillary tube: Steel material.

Pointer: Micro-metric Calibrated.

Case: Steel, Black enamel.

Front ring: Chrome plated, steel.

Window: Glass

OPERATING RANGE: Use 3/4 of full scale, short time peaks up to the full scale

MEASURING RANGE: -40+60°C/0+120°C/0+200°C/0+250°C/0+300°C/0+350°C/0+400°C/0+500°C

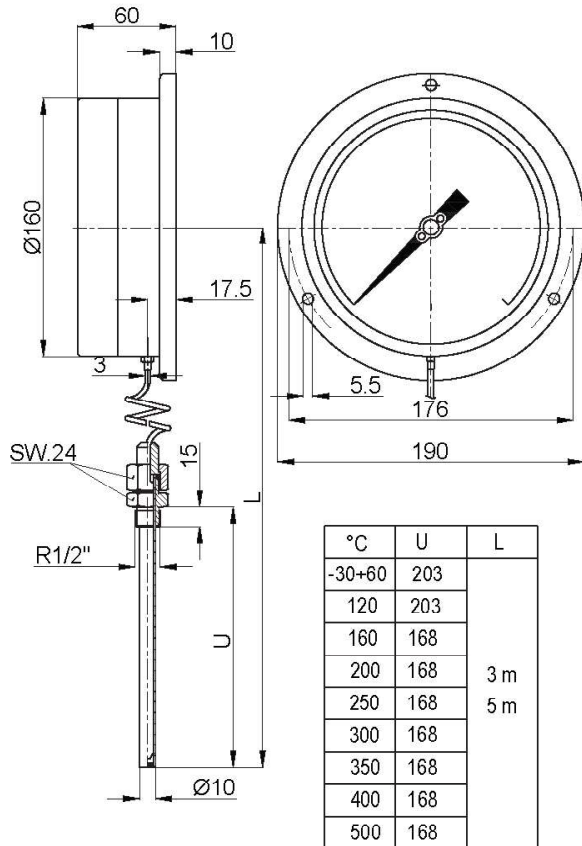
CAPPILARY LENGHT: 3 and 5 meters

Other measuring units can be printed on the dial, depending on the requirements.

TECHNICAL SPECIFICATIONS:

Accuracy: 1.0%F.S., (DIN 16203)

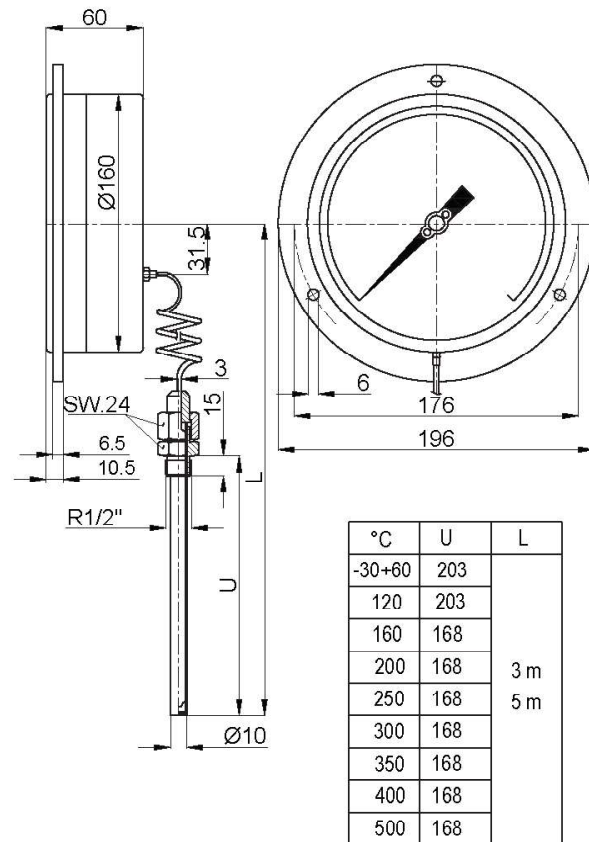
Mounting: Thermowell is mounted to the place where it is going to measure the temperature. Thermometer are calibrated according to the DIN 16203 .The base environment temperature is 23-/+2°C. The environment temperature of the cappillary tube and the case of the thermometer is advised not to be over -/+10°C of that calibration temperatures



Back Flange , Bottom Outlet

Nr: 160601

WEIGHT: 1740 gr



Front Flange , Bottom Outlet

Nr: 160602

WEIGHT: 1740 gr

Nr + Scale + Capillary length "L" + Quantity

LIQUID FILLED THERMOMOTERS

with ELECTRICAL NOMINAL SIZE 10mm

CONSTRUCTIVE SPECIFICATIONS:

Thermowell Connection: R 1/2" Stainless steel,

Movement: Brass for precision clockwork.

Sensor Tube: Steel material.

Capillary Tube: Steel material.

Pointer: Micro - metric Calibrated.

Case: Steel, Black enamel.

Front ring: Chrome plated, steel.

Window: Glass.

TECHNICAL SPECIFICATIONS:

Accuracy: 1.0 % F.S.,(DIN 16203)

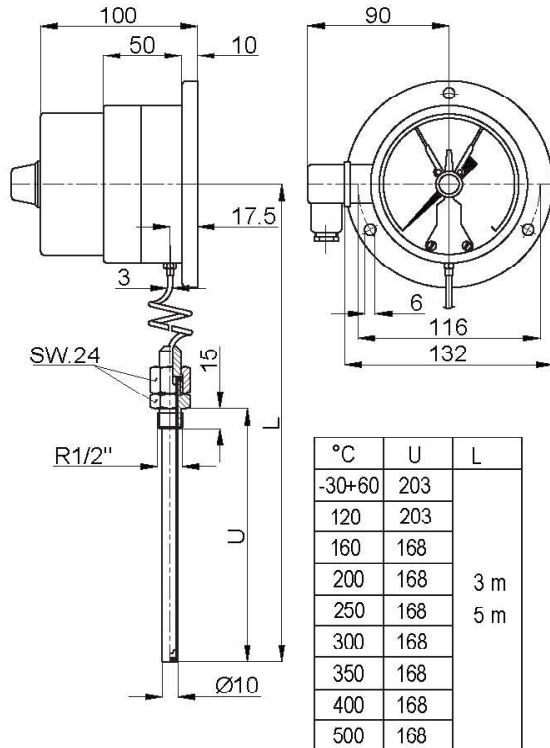
Mounting: Thermowell is mounted to the place where it is going to measure the temperature. Thermometers are calibrated according to the DIN 16203. The base environment is 23 ± 2 °C. The environment temperature of the capillary tube and the case of the thermometer is advised not to be over ± 10 °C of that calibration temperature.

OPERATING RANGE: Use 3/4 of full scale, short time peaks up to the full scale.

MEASURING RANGE: -40+60°C/0+120°C/0+160°C/0+200°C/0+250°C/0+300°C/0+350°C/0+400°C/0+500°C

CAPPILARY LENGTH: 3 and 5 meters.

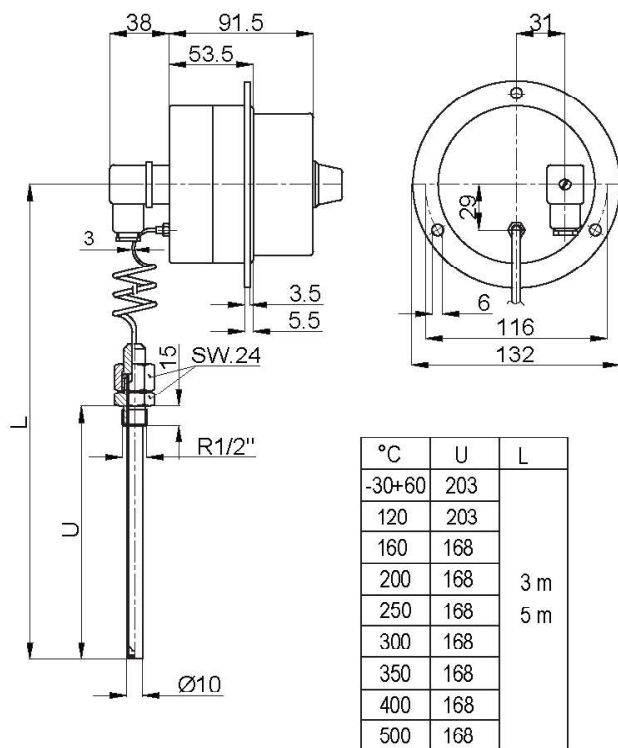
Other measuring units can be printed on the dial, depending on the requirements.



Back Flange, Bottom Outlet

Double Contact Nr :100601K

Weight :1220 gr



Front Flange, Bottom Outlet

Double Contact Nr :100602K

Weight :1220 gr

TO ORDER

Nr + Scale + Contact + Type + Cappilary leng "L" + Quantity

LIQUID FILLED THERMOMOTERS

with ELECTRICAL NOMINAL SIZE 160mm

CONSTRUCTIVE SPECIFICATIONS:

Thermowell Connection: R 1/2" Stainless steel,

Movement: Brass for precision clockwork.

Sensor Tube: Steel material.

Capillary Tube: Steel material.

Pointer: Micro - metric Calibrated.

Case: Steel, Black enamel.

Front ring: Chrome plated, steel.

Window: Glass.

TECHNICAL SPECIFICATIONS:

Accuracy: 1.0 % F.S.,(DIN 16203)

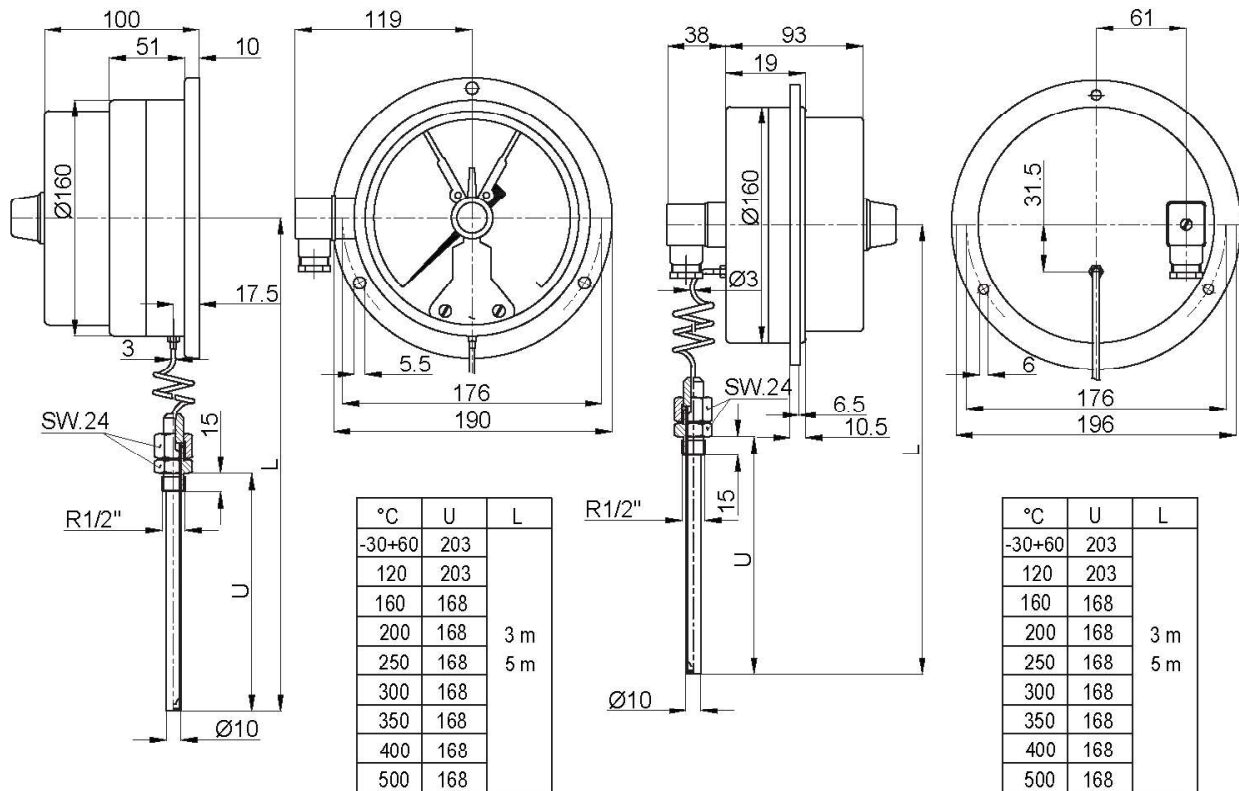
Mounting: Thermowell is mounted to the place where it is going to measure the temperature. Thermometers are calibrated according to the DIN 16203. The base environment is 23 ± 2 °C. The environment temperature of the capillary tube and the case of the thermometer is advised not to be over $-/+10$ °C of that calibration temperature.

OPERATING RANGE: Use 3/4 of full scale, short time peaks up to the full scale.

MEASURING RANGE: -40+60°C/0+120°C/0+160°C+200°C/0+250°C/0+300°C/0+350°C/0+400°C/0+500°C

CAPPILARY LENGTH: 3 and 5 meters.

Other measuring units can be printed on the dial, depending on the requirements.



Back Flange, Bottom Outlet

Double Contact Nr: 160601K

Weight: 1780 gr

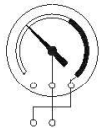

Front Flange, Bottom Outlet

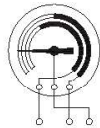

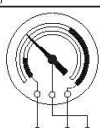

Double Contact Nr: 160602K

Weight: 1600 gr

TO ORDER

Nr = Scale + Contact Type + Capillary leng "L" + Quantity

CONTACT DEVICES WITH ONE CONTACT			
Switching Characteristic	Pointer moves clockwise	Contact Type and code	
	Switching function	Type	Code
 <p>1 . Contact (red) 2 . Neutral (green)</p>	Contact closes if value rises above limit	NA	PK 102
 <p>1 . Contact (red) 2 . Neutral (green)</p>	Contact opens if value rises above limit	NC	PK 101

CONTACT DEVICES WITH TWO CONTACT			
 <p>1 . Contact (red) 2 . Contact (blue) 3 . Neutral (green)</p>	Contact 1 and contact 2 close if value rises above limit	NANA	PK 122
 <p>1 . Contact (red) 2 . Contact (blue) 3 . Neutral (green)</p>	Contact 1 and contact 2 open if value rises above limit	NCNC	PK 111
 <p>1 . Contact (red) 2 . Contact (blue) 3 . Neutral (green)</p>	Contact 1 opens , contact 2 closes if value rises above limits	NCNA	PK 112
 <p>1 . Contact (red) 2 . Contact (blue) 3 . Neutral (green)</p>	Contact 1 closes contact 2 opens if value rises above limits	NANC	PK 134

LIQUID FILLED THERMOMOTERS

NOMINAL SIZE 65mm

CONSTRUCTIVE SPECIFICATIONS:

Thermowell Connection : R 1/2". Zinc coated steel.
(only 50mm. brass material)

Heat sensor: Bi metal Helical Spring, Sensor

Tube: Brass material,

Case: Steel, Zinc Coated.

Front ring: Chrome plated, steel.

Window: Glass or acrylic plastic.

MEASURING RANGE: -30 +60 °C 0+120 °C

0+160 °C 0+200 °C 0+250 °C 0+300 °C

0+350 °C 0+400 °C 0+500 Other measuring units can be printed on the dial, depending on the requirements.

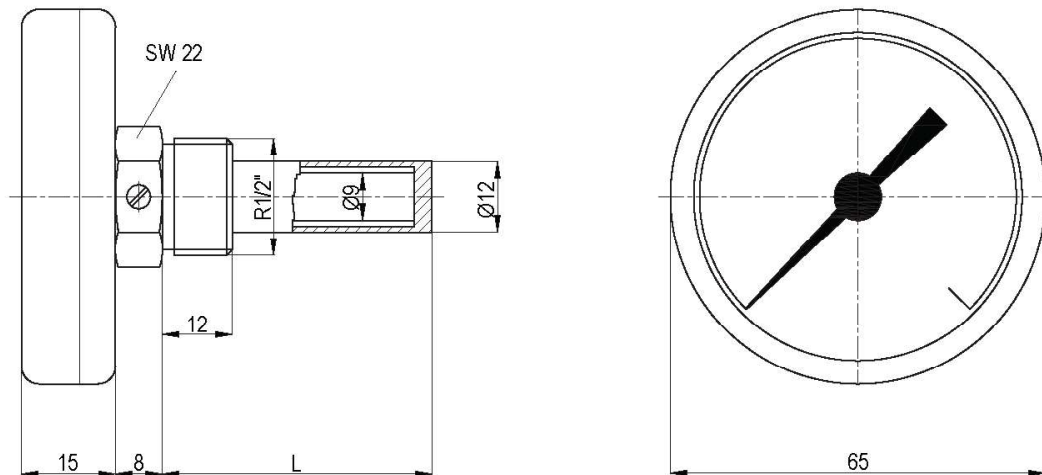
NOMINAL THERMOWELL LENGTHS: Shown in technical drawings.

TECHNICAL SPECIFICATIONS:

Accuracy: 2.0 % F.S., (DIN 16203)

Mounting: Thermowell is mounted to the place where it is going to measure temperature. Put the sensor tube into thermovil. When mounting do never screw it by holding from its case. Screw it by a spanner from the thermowell.

Operating Range: Use 3/4 of full scale. Short time peaks up to the full scale.



°C	L Stem Length									
	50	100	150	200	250	300	400	500	700	1000
-30 +60	-	x	x	x	x	x	x	x	x	x
120	x	x	x	x	x	x	x	x	x	x
160	x	x	x	x	x	x	x	x	x	x
200	-	x	x	x	x	x	x	x	x	x
250	-	x	x	x	x	x	x	x	x	x
300	-	x	x	x	x	x	x	x	x	x
350	-	x	x	x	x	x	x	x	x	x
400	-	x	x	x	x	x	x	x	x	x
500	-	x	x	x	x	x	x	x	x	x

Back Connection

Weight: 180gr

Nr : 065402

TO ORDER

Nr + Scale + Stem Length "L" + Quantity

LIQUID FILLED THERMOMOTERS

NOMINAL SIZE 100mm

CONSTRUCTIVE SPECIFICATIONS:

Thermowell Connection: R1/2" Zinc coated steel.
Heat Sensor: Bi metal Helical Spring.
Sensor Tube: Brass material.
Case: Bottom connection black enamel steel, back connection Zn coated steel.
Front Ring: Bottom connection bajonet black enamel steel, back connection chrome plated steel.
Window: Glass or acrylic plastic.

Operating Range: Use 3/4 of full scale, short time peaks up to the full scale

MEASURE RANGE: -30 +60 °C, 0 + 120 °C, 0 +160 °C, 0 + 500 °C

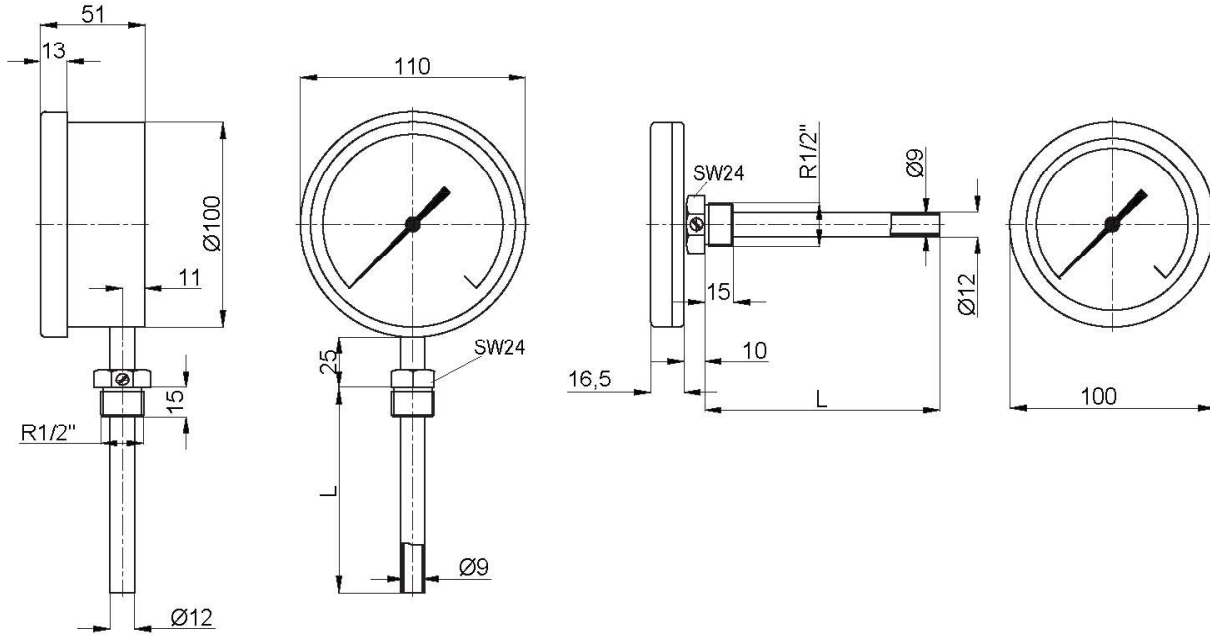
Other measuring units can be printed on the dial, depending on the requirements.

NOMINAL THERMOELL LENGTHS: Shown in technical drawings.

TECHNICAL SPECIFICATIONS:

Accuracy: 2.0 % F.S., (DIN 16203)

Mounting: Thermowell is mounted to the place where it is going to measure temperature. Put the sensor tube into the thermovil. When mounting do never screw it by holding from its case. Screw it by a spanner from the thermowell.



°C	L Stem Length									
	50	100	150	200	250	300	400	500	700	1000
-30+60	x	x	x	x	x	x	x	x	-	-
120	x	x	x	x	x	x	x	x	-	-
160	x	x	x	x	x	x	x	x	-	-
200	x	x	x	x	x	x	x	x	-	-
250	x	x	x	x	x	x	x	x	-	-
300	x	x	x	x	x	x	x	x	-	-
350	x	x	x	x	x	x	x	x	-	-
400	x	x	x	x	x	x	x	x	-	-
500	x	x	x	x	x	x	x	x	-	-

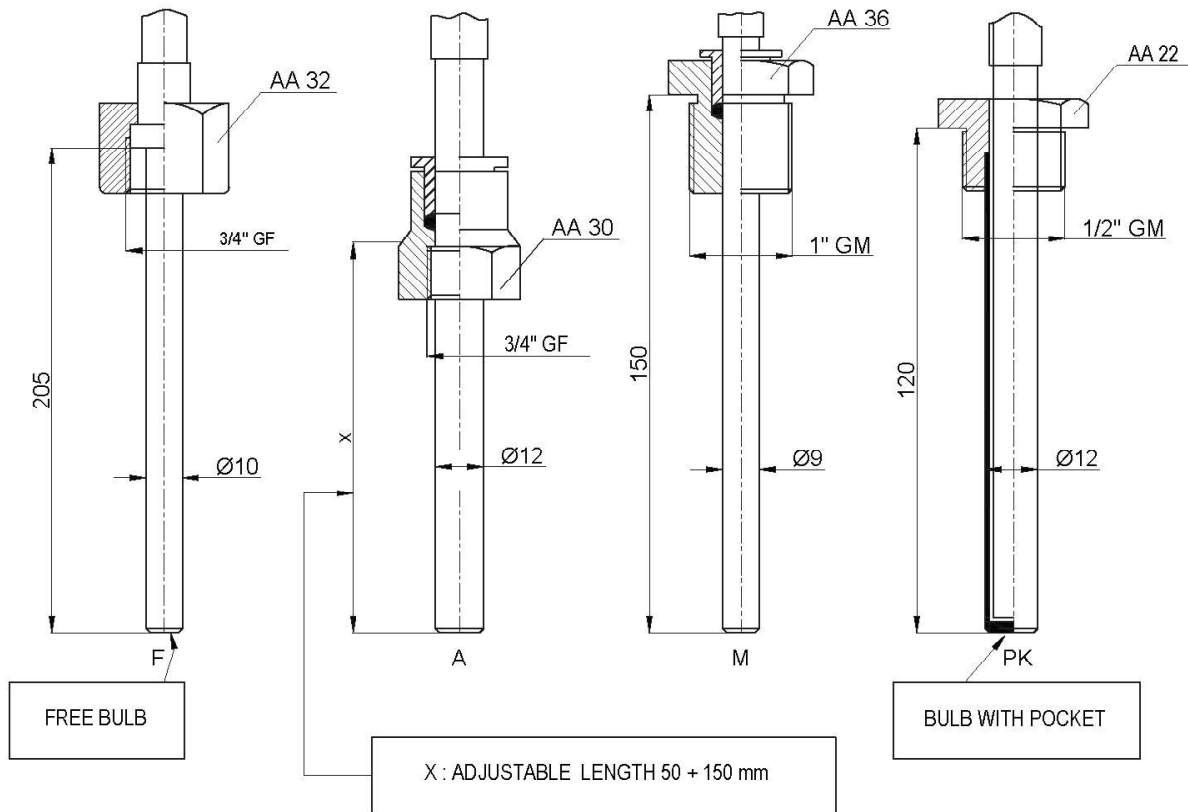
°C	L Stem Length									
	50	100	150	200	250	300	400	500	700	1000
-30 +60	-	x	x	x	x	x	x	x	x	x
120	-	x	x	x	x	x	x	x	x	x
160	-	x	x	x	x	x	x	x	x	x
200	-	x	x	x	x	x	x	x	x	x
250	-	x	x	x	x	x	x	x	x	x
300	-	x	x	x	x	x	x	x	x	x
350	-	x	x	x	x	x	x	x	x	x
400	-	x	x	x	x	x	x	x	x	x
500	-	x	x	x	x	x	x	x	x	x

Bottom Connection Weight: 430 gr Nr: 100401

Back Connection Weight: 300 gr Nr: 100402

TO ORDER

Nr + Scale + Stem "L" + Quantity



MATERIAL : Stainless Steel or Brass