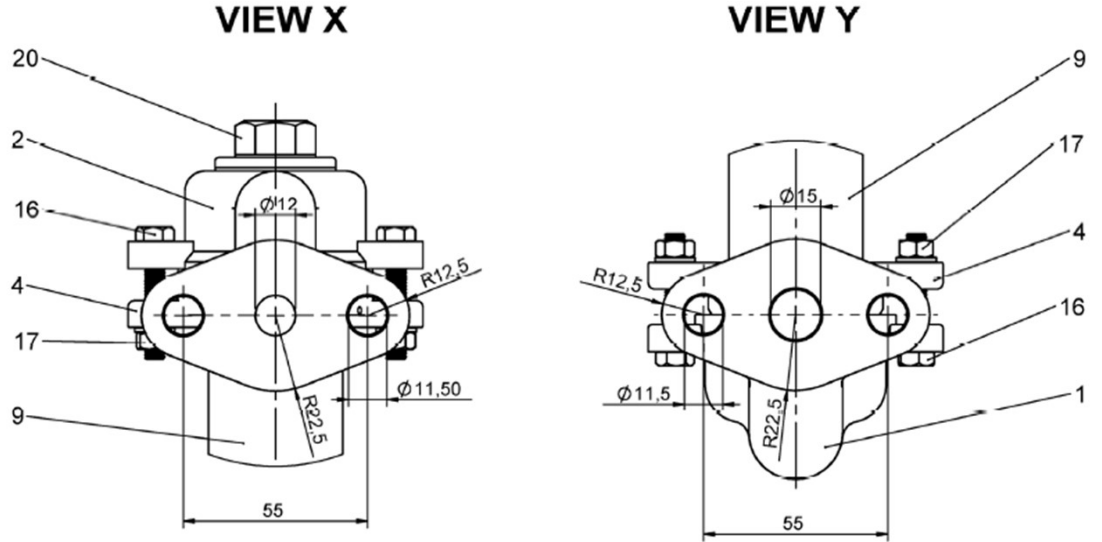


# Oil Level Indicator Vertical DIN 42552 B



## Connection Detail ;



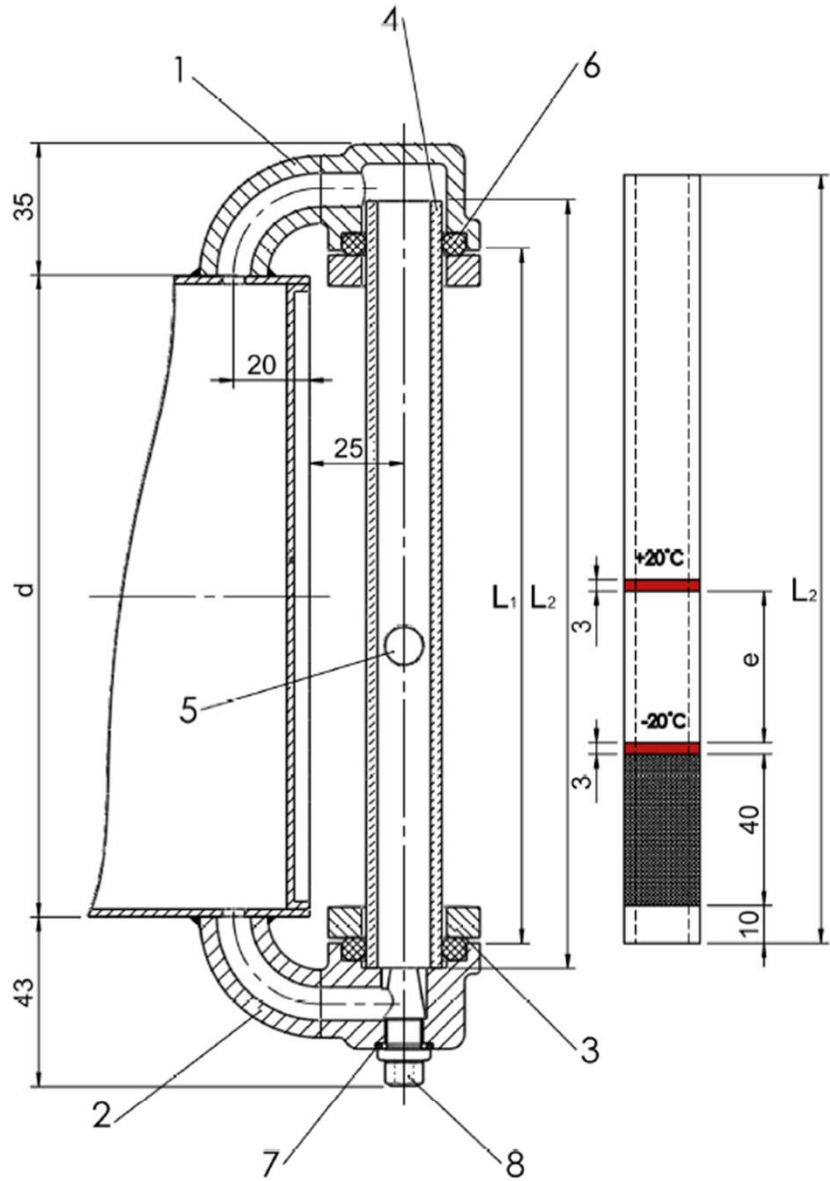
### PART LIST

Item	Q'ty	Designation	Short	Remarks
1	1	Bottom Part	DIN 42552-1	GG 20 Gal. Zn.
2	1	Head Part	DIN 42552-2	GG 20 Gal. Zn.
3	1	Handle	DIN 42552-3	GG 20 Gal. Zn.
4	2	Press Ring	DIN 42552-4	GG 20 Gal. Zn.
5	1	Rotary Spindle	DIN 42552-5	MS 58
6	1	Bushing	DIN 42552-6	MS 58
7	1	Temperature Label	DIN 42552-7	1)
8	2	Press Ring	DIN 42552-8	St 12 - 1.0330
9	1	Tube	DIN 42552-9	Glass ISO 719
10	1	Floating Ball	DIN 42552-10	Glass Blue
11	1	Gasket	DIN 42552-12	Free of Asbestos
12	1	Washer	DIN 42552-12	Psp 3050 DIN 40600
13	1	Packing Washer	DIN 42552-13	PA 6
14	2	Gasket	DIN 42552-14	NBR 70
15	3	Gasket	DIN 42552-15	NBR 70
16	4	Hex Screw	ISO 4014-M6x35	A2-70
17	4	Nut	ISO 4032-M6	A2-70
18	1	Stop Screw	DIN 85-M8x10	Ms
19	1	Pin	DIN 7-3h8x28	A2
20	1	Stop Screw	DIN 7604-A-M30x1,5	A2-70
21	1	Packing Washer	DIN 42 552-21	PA 6

### Special Design ;

Tube (9) : Plexiglass  
Gasket (11) : NBR 70 Shore

# Oil Level Indicator Vertical DIN 42555



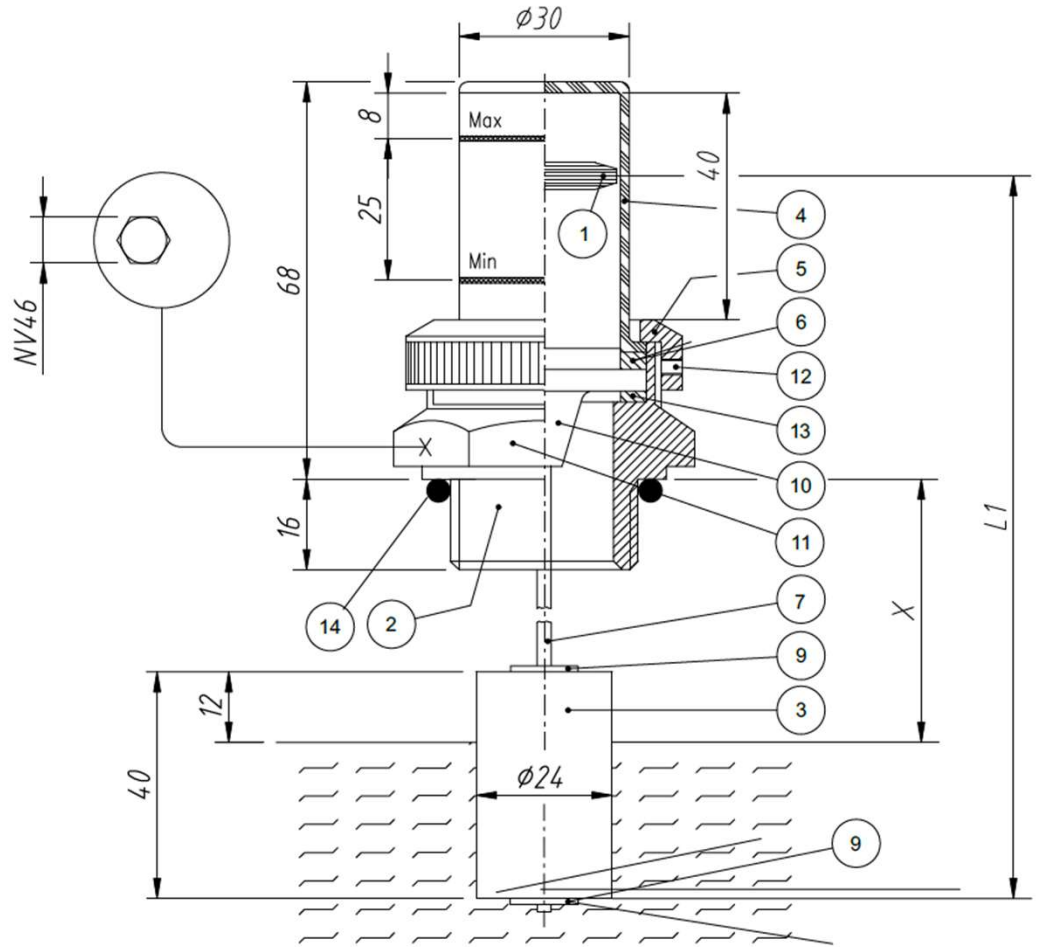
**DIN 42555 STANDARD LENGTH**

d	L1 ± 2	L2 ± 1	e
160	174	193	40
200	214	233	53
250	264	283	72
315	329	348	95
400	414	433	125
500	514	533	165
630	644	663	219

**PART LIST**

Item	Description	Short	Q'ty
1	Top Section	1DIN 42555	1
2	Bottom Section	2 DIN 42555	1
3	Flange	3 DIN 42555	2
4	Tube	4 DIN42555 - L <sub>1</sub>	1
5	Ball	5 DIN 42555	1
6	O-Ring	6 DIN 42555	2
7	Gasket	7 DIN 42555	1
8	Blind Plug	M10x1 DIN 910- 5.8 A4G	1
9	Bolt Screw	M6x20 DIN 933- 5.8 A4G	4

# Oil Level Indicator Vertical G1” & G 1¼ “



Nr	Part Name
1	Max Pointer
2	Brass Body
3	Float
4	Screen
5	Brass Ring
6	Sealing Or
7	Float Shaft
9	Ring Stopper
10	Center Ring
11	Brass Body
12	Lock Screw
13	Nbr Gasket
14	O-ring or Flat Gasket

\* Lever arm length L1 is optional