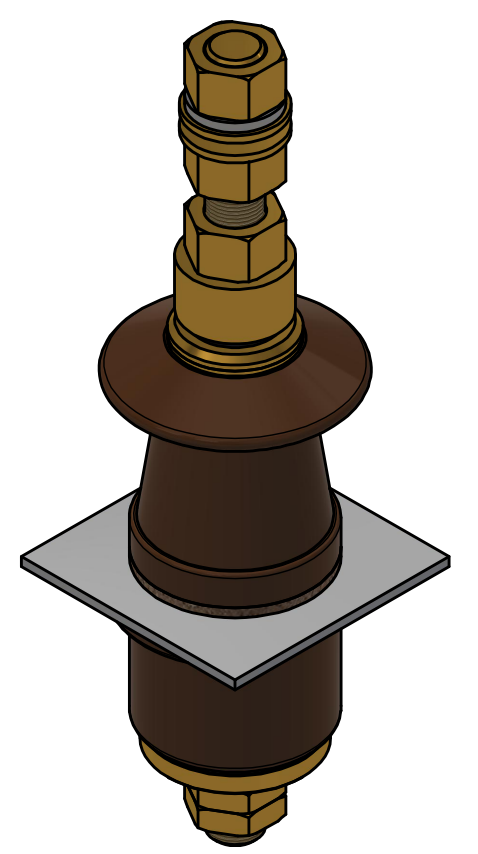
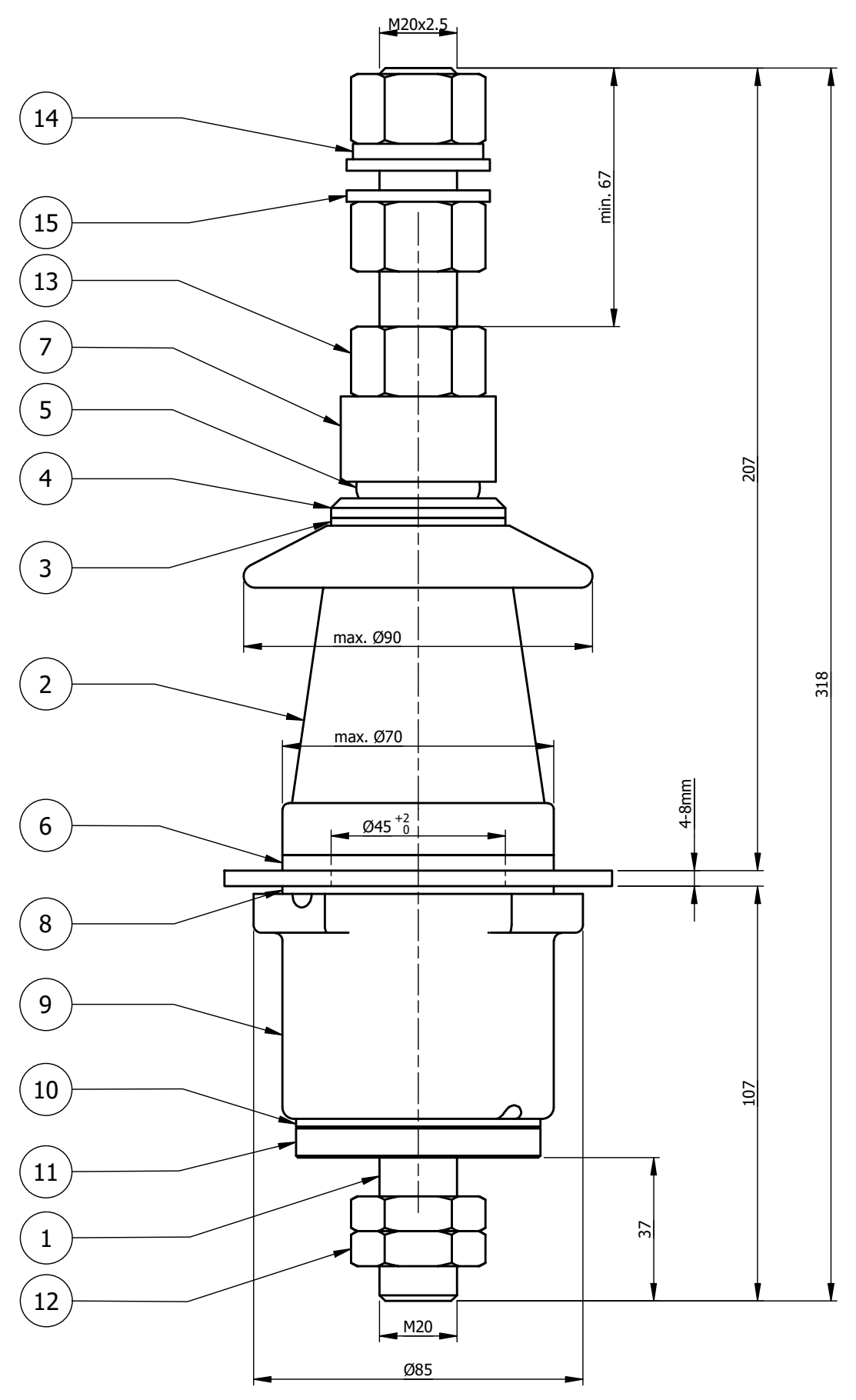


This document is the exclusive property of METSON POWER. And shall not be used, copied or communicated to third parties without its prior authorisation.



CREEPAGE DISTANCE : 120mm

ITEM	QTY	DESCRIPTION	DIMENSION	MAT'L	ITEM CODE	REMARKS
15	2	Brass Plain Washer M20	-	Brass		
14	1	Spring Lock M20	-	Stainless Steel		
13	3	Brass Full Nut M20	-	Brass		
12	2	Brass Half Nut M20	-	Brass		
11	1	Stem Bottom Part	Ø63xØ17.5x18	Brass		
10	1	"P" Gasket 63x40x2	-	Pressboard		
9	1	Bottom Porcelain	Ø85xØ70x58	Ceramic Porcelain		
8	1	"O" Gasket 70x45x2	-	Pressboard		
7	1	"E" Cap	Ø40xØ21x22	Brass		
6	1	"N" Gasket 70x45x2	-	Cork Rubber		
5	1	"J" Gasket 32x20x13	-	NBR		
4	1	"G" Washer	Ø45xØ21x5	Brass		
3	1	"M" Gasket 45x22x2	-	Cork Rubber		
2	1	Top Porcelain	Ø90x135	Ceramic Porcelain		
1	1	Stem	Ø20x318	Brass		

ITEM	QTY	DESCRIPTION	DIMENSION	MAT'L	ITEM CODE	REMARKS	
00	27/10/23	RV	MA	MA	Original		
Rev	Date	Drw	Chk	App	Description		
General Tolerance			Surface Texture : ISO 1302		All dimension in millimetres unless otherwise stated		
Machining : ISO 2768 - Coarse			IF IN DOUBT - PLEASE ASK !				
			Title				
			LV Bushing 3kV/630A DIN				
Metson Power Fatih sultan Mehmet Bulv.inonu Mah. No 412B Blok Daire 57, Yenimahalle, Ankara TURKEY			Description		Scale		
			DT3/630A		1 : 1.5		
Drawing No.			ID_A0207100		Sheet No.	Total Sheet	Size
					1	1	A3