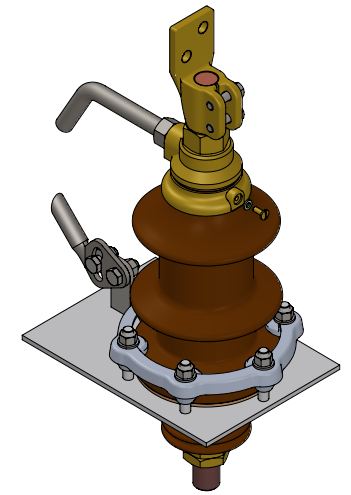
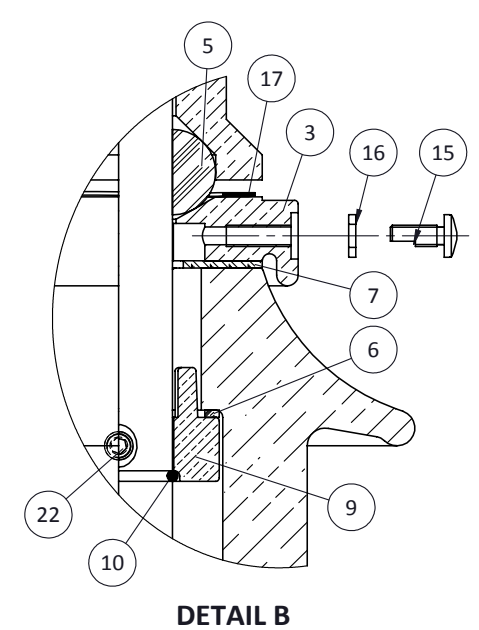
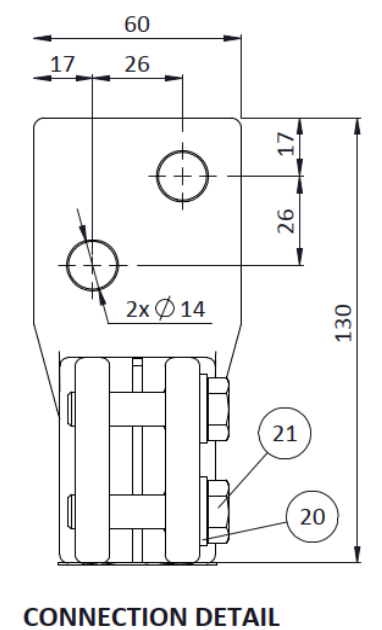
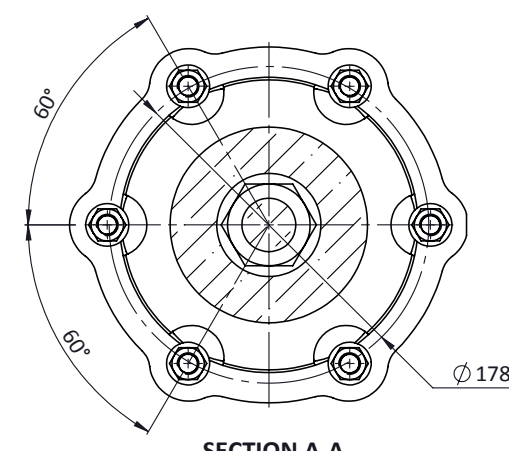
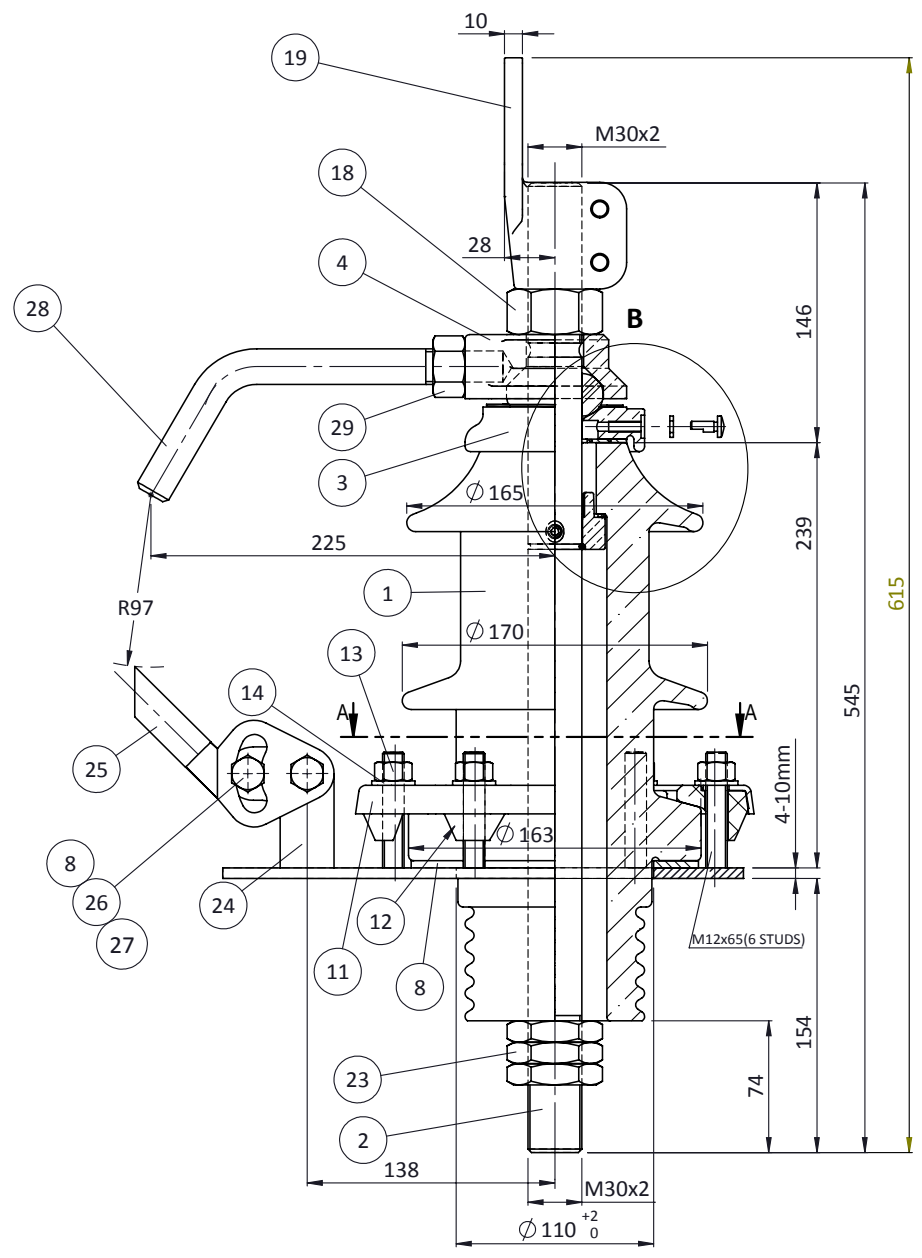


This document is the exclusive property of METSON POWER. And shall not be used, copied or communicated to third parties without its prior authorization.



CREEPAGE DISTANCE = 295mm

| ITEM | QTY | DESCRIPTION | DIMENSION | MAT'L | ITEM CODE | REMARKS |
|------|-----|-------------------------------|-----------|-------------------|-----------|---------|
| 29 | 1 | STEEL NUT M20 ISO 4032 | | Steel | | |
| 28 | 1 | TOP ARCING HORN | | Steel | | |
| 27 | 2 | SPRING WASHER M12 DIN 127 | | Steel | | |
| 26 | 2 | BOLT M12x30 ISO 24017 | | Steel | | |
| 25 | 1 | BOTTOM ARCING HORN | | Steel | | |
| 24 | 1 | "T" SUPPORT | | Steel | | |
| 23 | 3 | BRASS HALF NUT M30 UNI 5589 | | Brass | | |
| 22 | 2 | SET SCREW M8x15 | | Steel | | |
| 21 | 2 | BOLT M10x40 ISO 24017 | | Stainless Steel | | |
| 20 | 2 | PLAIN WASHER M10 DIN 125 | | Stainless Steel | | |
| 19 | 1 | CONNECTION FLAG | | Brass | | |
| 18 | 1 | BRASS FULL NUT M30x2 ISO 4032 | | Brass | | |
| 17 | 1 | U -WASHER | | Copper | | |
| 16 | 1 | "R" BOLT GASKET M6 | | Pressboard | | |
| 15 | 1 | "R" BOLT | | Brass | | |
| 14 | 6 | PLAIN WASHER M12 DIN 125 | | Steel | | |
| 13 | 8 | STEEL NUT M12 | | Steel | | |
| 12 | 6 | ALU- PRESS BIT DIN 42538 | | Aluminum | | |
| 11 | 1 | FIXING RING DIN 42538 | | Aluminum | | |
| 10 | 1 | "S" RING | | Copper | | |
| 9 | 1 | PRESSING RING | | Brass | | |
| 8 | 1 | "N" GASKET 160x110x4 | | Cork Rubber | | |
| 7 | 1 | "M" GASKET 80x36x2 | | Cork Rubber | | |
| 6 | 1 | "O" GASKET 56x48x2 | | Pressboard | | |
| 5 | 1 | "J" GASKET 52x30x24 | | NBR | | |
| 4 | 1 | "F" CAP | | Brass | | |
| 3 | 1 | "E" CAP | | Brass | | |
| 2 | 1 | STEM | | Copper | | |
| 1 | 1 | TOP PORCELAIN | | Ceramic Porcelain | | |

| ITEM | QTY | DESCRIPTION | DIMENSION | MAT'L | ITEM CODE | REMARKS |
|--|----------|-------------|---------------------------------|----------------------------|--|-------------|
| 03 | | | | | | |
| 02 | | | | | | |
| 01 | | | | | | |
| 00 | 13/07/21 | RV | MA | MA | | Original |
| Rev | Date | Drw | Chk | App | | Description |
| General Tolerance Machining : ISO 2768 - Coarse | | | | Surface Texture : ISO 1302 | All dimension in millimetres unless otherwise stated | |
| IF IN DOUBT - PLEASE ASK ! | | | | | | |
| | | | Title | | | |
| | | | HV BUSHING 12kV/1000A DIN 42531 | | | |
| Metson Power SAN. VE TIC. A.S. Fatih sultan Mehmet Bulv.inonu Mah. No 412B Blok Daire 57, Yenimahalle, Ankara - TURKEY | | | Description | | Scale | |
| | | | 10NF 1000A | | NTS | |
| Drawing No. ID_A0303100 | | | Sheet No. | Total Sheet | Size | |
| | | | 1 | 1 | A3 | |