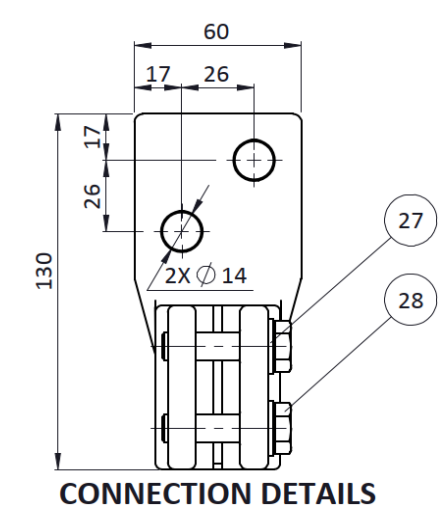
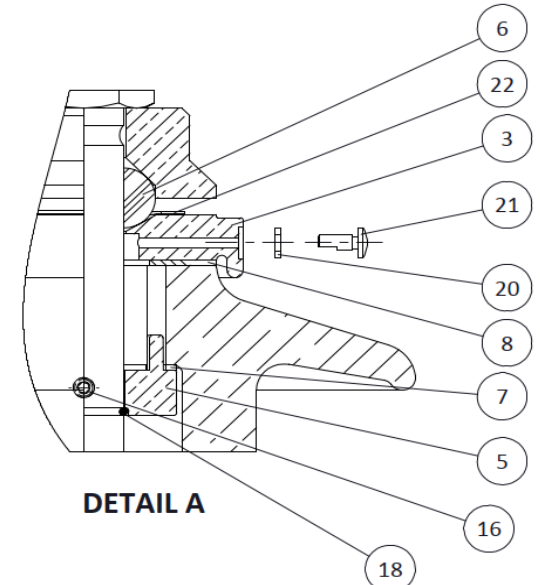
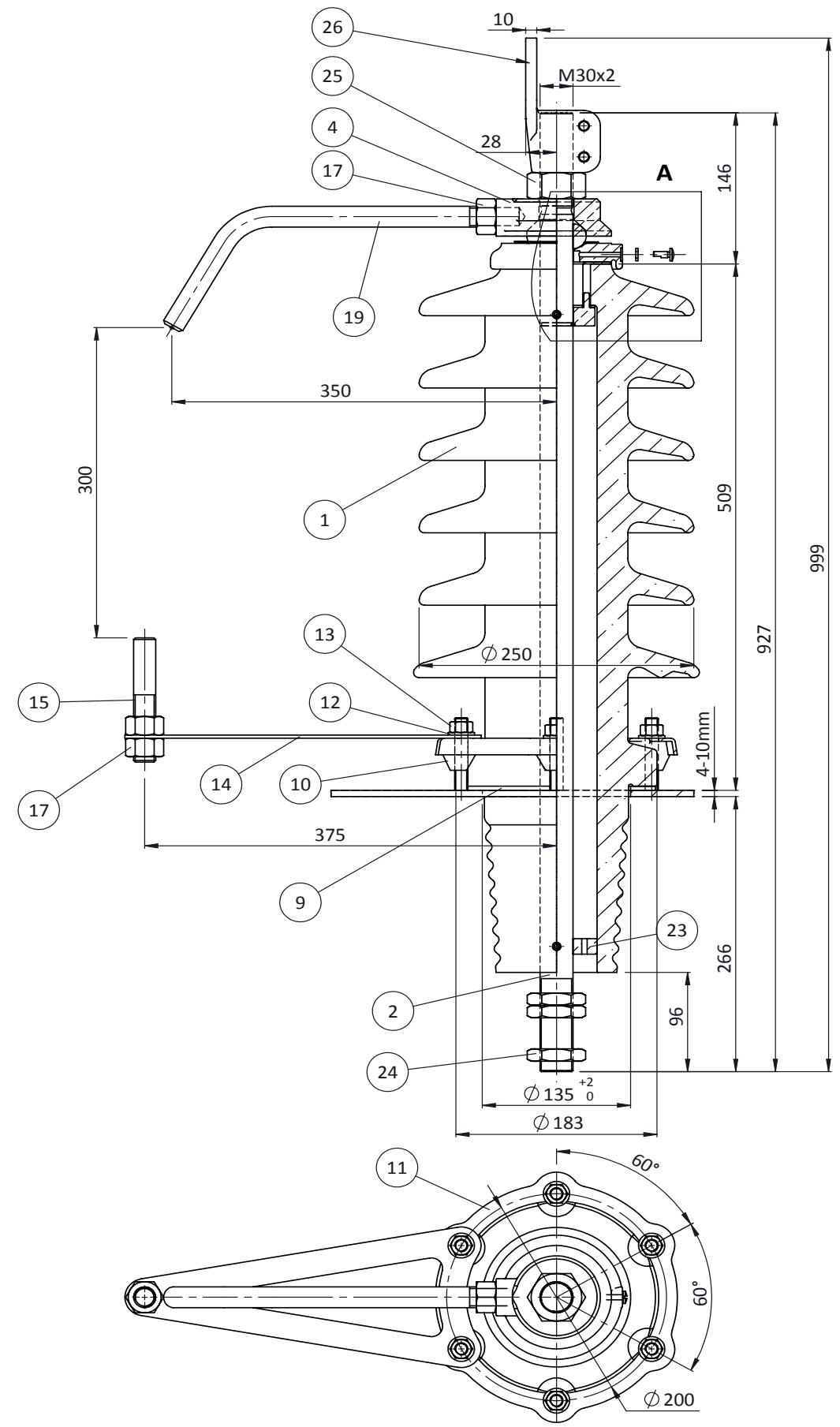
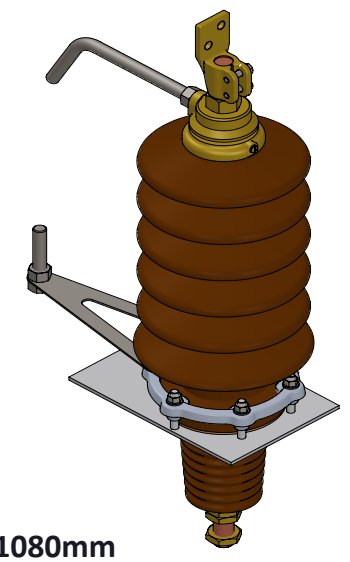


This document is the exclusive property of METSON POWER. And shall not be used, copied or communicated to third parties without its prior authorization.



**CREEPAGE DISTANCE = 1080mm**



ITEM	QTY	DESCRIPTION	DIMENSION	MAT'L	ITEM CODE	REMARKS
28	2	BOLT M10x40 ISO 24017		Steel		
27	2	STEEL PLAIN WASHER M10 DIN125		Steel		
26	1	CONNECTION FLAG		Brass		
25	1	BRASS FULL NUT M30x2 ISO 4032		Brass		
24	3	HALF BRASS NUT M30 UNI 5589		Brass		
23	1	CENTERING RING		Brass		
22	1	U -WASHER		Copper		
21	1	"R" BOLT		Brass		
20	1	"R" BOLT GASKET M6		Pressboard		
19	1	ARCING HORN TOP		Steel		
18	1	"S" RING		Copper		
17	3	STEEL NUT M20 ISO 4032		Steel		
16	4	SET SCREW M8x15		Steel		
15	1	BOTTOM ARCING HORN		Steel		
14	1	"V" SUPPORT		Steel		
13	6	STEEL NUT M12		Steel		
12	6	PLAIN WASHER M12 DIN 125		Steel		
11	1	FIXING RING DIN 42538		Aluminum		
10	6	ALU - PRESS BIT DIN 42538		Aluminum		
9	1	"N" GASKET 180x135x4		Cork Rubber		
8	1	"M" GASKET 100x50x2		Cork Rubber		
7	1	"O" GASKET 70x50x2		Cork Rubber		
6	1	"J" GASKET 52x30x24		NBR		
5	1	PRESSING RING		Brass		
4	1	"F" CAP		Brass		
3	1	"E" CAP		Brass		
2	1	STEM		Copper		
1	1	TOP PORCELAIN		Ceramic Porcelain		

ITEM	QTY	DESCRIPTION	DIMENSION	MAT'L	ITEM CODE	REMARKS
00	13/07/21	RV	MA	MA	Original	
Rev	Date	Drw	Chk	App	Description	
General Tolerance Machining : ISO 2768 - Coarse				Surface Texture : ISO 1302	All dimension in millimetres unless otherwise stated	
<b>IF IN DOUBT - PLEASE ASK !</b>						
				Title		
				HV BUSHING 52kV/1000A		
				Description		Scale
				52NF 1000A		NTS
Metson Power SAN. VE TIC. A.S. Fatih sultan Mehmet Bulv.inonu Mah. No 412B Blok Daire 57, Yenimahalle, Ankara - TURKEY				Drawing No.	Sheet No.	Total Sheet
				ID_A0321100	1	1
						Size A3